



Spare parts MAN D series

suitable for

D2566

D2840

D2842

D2848

D2862

D2866

D2876

E3262

MAN 800 LIGHT DUTY

What's inside?

MAN is one of the world's leading manufacturers of high-performance diesel and gas engines for industrial and commercial applications.

Our focus is on **MAN D-series** engines used in ships and stationary generator systems.

1

D2566

2

D2840

3

D2842

4

D2848

5

D2862

6

D2866

7

D2876

8

E3262

The **MAN D series** comprises a range of robust diesel engines designed for heavy-duty operation in various industrial sectors. These engines are frequently used in marine applications, construction machinery and power generation systems.

1 - MAN D2566

The **MAN D2840** is a V10 diesel engine designed for medium-duty operation with up to 3,000 operating hours per year and a maximum full-load share of 50%. Known for its robust design and long service life, it is especially well-suited for marine and stationary applications where both reliability and efficiency are critical.

Typical applications:

- **Passenger vessels**
- **Ferries**
- **Fishing boats**
- **Auxiliary marine engines**
- **Stationary generator systems in medium-duty operation**



INJECTION NOZZLE

51101020146

suitable for MAN D engines

2 - MAN D2840

The **MAN D2840** is a powerful V10 diesel engine known for its compact design and high performance in heavy-duty applications. Built for continuous operation, it delivers reliable output in both stationary and mobile industrial systems. The engine is particularly suited for demanding environments where durability, high torque and long service intervals are critical

Typical applications:

- **Passenger ships**
- **Ferries**
- **Fishing vessels**
- **Stationary generator sets**
- **Marine auxiliary drives**



OIL PUMP

51051006253

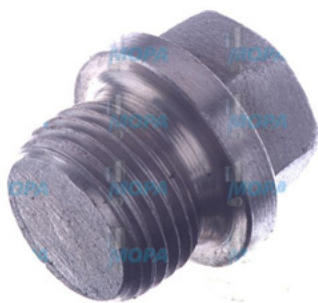
suitable for MAN D engines

3 - MAN D2842

The **MAN D2842** is a high-performance V12 diesel engine designed for demanding industrial, marine and power generation applications. Known for its durability and high power output, this engine is used in systems where continuous operation under heavy load is essential. Its compact V12 configuration allows for strong performance in relatively tight installation spaces, making it ideal for large-scale propulsion and power systems.

Typical applications:

- **Tugboats**
- **Trawlers**
- **Cargo vessels**
- **Marine propulsion under continuous full-load operation**
- **Heavy-duty ship engine systems**



SCREW PLUG

06080690028

suitable for MAN D engines

4 - MAN D2848

The **MAN D2848** is a compact and reliable V8 diesel engine developed for a wide range of industrial and mobile applications. With 8 cylinders in a V-configuration, this engine is known for its balance of performance and efficiency. The D2848 is particularly suited for systems requiring high power in limited space and has been used successfully in marine propulsion and power generation.

Typical applications:

- **Passenger ships**
- **Ferries**
- **Fishing vessels**
- **Marine propulsion in medium-duty operation**
- **Generator units in coastal and harbor environments**



GASKET

51089020161

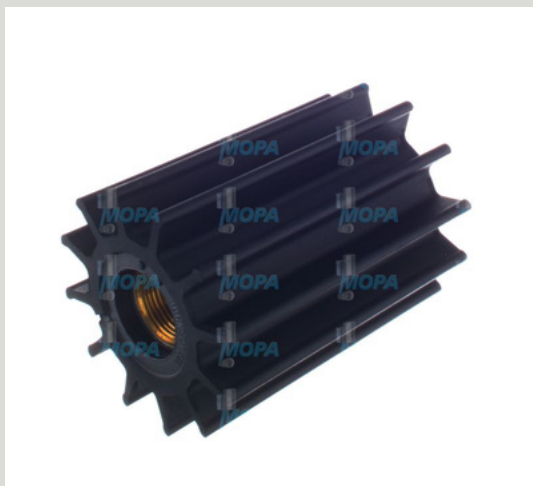
suitable for MAN D engines

5 - MAN D2862

The **MAN D2862** is a high-performance V12 diesel engine developed for heavy-duty applications requiring continuous power, durability and efficiency. With 12 cylinders and a modern, compact design, the **D2862** delivers strong output and smooth operation across a wide range of use cases. It is frequently found in marine propulsion systems, power generators, and high-demand industrial equipment.

Typical applications:

- **Large passenger vessels**
- **Ferries and offshore service ships**
- **High-performance fishing vessels**
- **Heavy-duty generator systems**
- **Continuous-duty marine propulsion in high-load environments**



IMPELLER

51065060106

suitable for MAN D engines

6 - MAN D2866

The **MAN D2866** is a robust inline 6-cylinder diesel engine that has proven itself over decades in industrial and marine applications. With its straightforward design, high reliability and ease of maintenance, the **D2866** is still widely used in environments that demand consistent performance under tough conditions.

Typical applications:

- **Tugboats**
- **Trawlers**
- **Cargo ships**
- **Continuous marine propulsion under full-load conditions**
- **Heavy-duty ship engine systems with high operating hours**



FLOATING SEAL

51065200082

suitable for MAN D engines

7 - MAN D2876

The **MAN D2876** is a modern inline 6-cylinder diesel engine designed for high-performance applications in transport, industry, marine and energy sectors. Featuring electronic engine management and high-pressure injection, it combines powerful output with fuel efficiency and lower emissions. The **D2876** is used in both mobile and stationary systems requiring strong, continuous performance.

Typical applications:

- **Tugboats**
- **Trawlers**
- **Cargo vessels**
- **Marine propulsion in heavy-duty, continuous operation**
- **Engine systems designed for 100% full-load performance**



GROOVED BALL BEARING
51934100104
suitable for MAN D engines

8 - MAN E3262

The **MAN E3262** is a high-efficiency V12 gas engine developed for combined heat and power (CHP) and stationary energy systems. It runs on natural gas or biogas and is known for its fuel economy, low emissions and outstanding reliability in continuous operation. With an output range of up to 550 kW, the **E3262** is widely used in decentralized energy supply and industrial power generation.

Typical applications:

- **Combined heat and power (CHP) units**
- **Decentralized power generation for industrial and municipal systems**
- **Agricultural and greenhouse energy applications**
- **Base-load and peak-load operation at 1500/1800 rpm (50/60 Hz)**



EXTERNAL HEX ROUND BOLT
51900200500
suitable for MAN D-engines